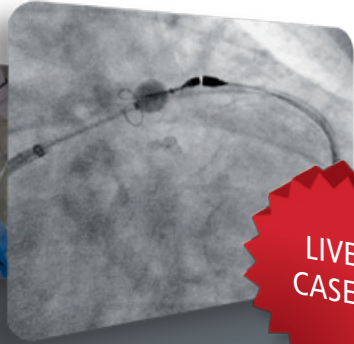




LAA ASIA-PACIFIC  
CSI FOCUS



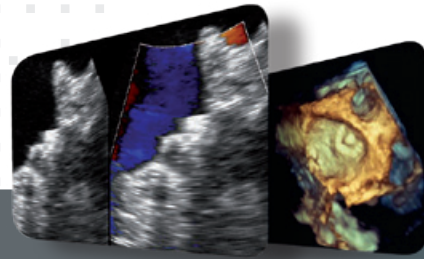
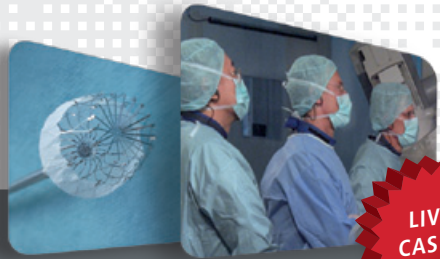
LIVE  
CASES

# LAA 2012 ASIA PACIFIC

MAY 5, 2012 | SINGAPORE, REPUBLIC OF SINGAPORE



All you Need to Know About LAA Closure  
[www.csi-laa.org](http://www.csi-laa.org)



MAY 5, 2012  
SINGAPORE, REPUBLIC OF SINGAPORE

## LAA 2012 ASIA PACIFIC

MAY 5, 2012 | SINGAPORE, REPUBLIC OF SINGAPORE

### >> All you Need to Know About LAA Closure

- Indications for LAA Closure
- Transseptal Puncture Techniques
- Impact of Imaging Modalities
- LAA Closure Techniques
- Prevention and Management of Complications

### >> Who Should Attend

- Interventional Cardiologists, EP Cardiologists

SEE YOU  
IN SINGAPORE!

### COURSE DIRECTORS

Tian Hai Koh, MD  
National Heart Center  
Singapore, Republic of Singapore

Horst Sievert, MD  
CardioVascular Center Frankfurt  
Frankfurt, Germany



Register now on [www.csi-laa.org](http://www.csi-laa.org)

### ALL YOU NEED TO KNOW ABOUT LAA CLOSURE!

Dear Colleagues,

Atrial fibrillation is one of the leading causes of stroke in elder patients. During the last few years left atrial appendage closure has shown to be at least as effective as anticoagulation when it comes to stroke prevention. The spectrum of devices available is under constant development and many new techniques are already in clinical trials.

This year's LAA focus workshop is designed to give you an overview on all aspects of this treatment modality, from its background to current clinical data and new devices. We will explain how to perform the procedure step by step and how to deal with complications.

We look forward to seeing you in Singapore,

Tian Hai Koh  
Horst Sievert

For further information and registration: [www.csi-laa.org](http://www.csi-laa.org)



**LAA ASIA-PACIFIC**  
CSI FOCUS

**MAY 5, 2012 | SINGAPORE, REPUBLIC OF SINGAPORE**

>> All you Need to Know About LAA Closure

### **WORKSHOP VENUE**

Holiday Inn Atrium Singapore  
317 Outram Road  
Singapore 169075

### **REGISTRATION FEES 2012**

Physicians	250,- €
Students, Fellows,	
Nurses, Technicians	195,- €
Industry Professionals	600,- €

**2012**  
[www.csi-laa.org](http://www.csi-laa.org)

**cme4u**

CONGRESSES  
MEETINGS  
AND EDUCATION

### **CONGRESS ORGANISATION**

cme4u GmbH  
Gutleutstrasse 322  
60327 Frankfurt, Germany  
Phone: + 49 - 69 - 89 99 05 07  
Fax: + 49 - 69 - 25 62 86 58  
E-mail: [info@cme4u.org](mailto:info@cme4u.org)  
[www.cme4u.org](http://www.cme4u.org)

### **IN COOPERATION WITH**

National Heart Centre Singapore  
17 Third Hospital Avenue  
Singapore 168752  
[www.nhcs.com.sg](http://www.nhcs.com.sg)